



COMPANY PROFILE

Published Date : 2019.12

Version : V19.01

Content

► *Company Overview*

- | | |
|---------------------------------------|------------------------------|
| • WinWay Introduction | • Marketing Application |
| • Organization | • Product Roadmap |
| • Milestone | • VLSI Marketing Information |
| • Subsidiaries and Service Networking | • Core Competence |
| • Product Overview | • Certification |

► *Operation & Financial Results*

- Financial Results



COMPANY OVERVIEW

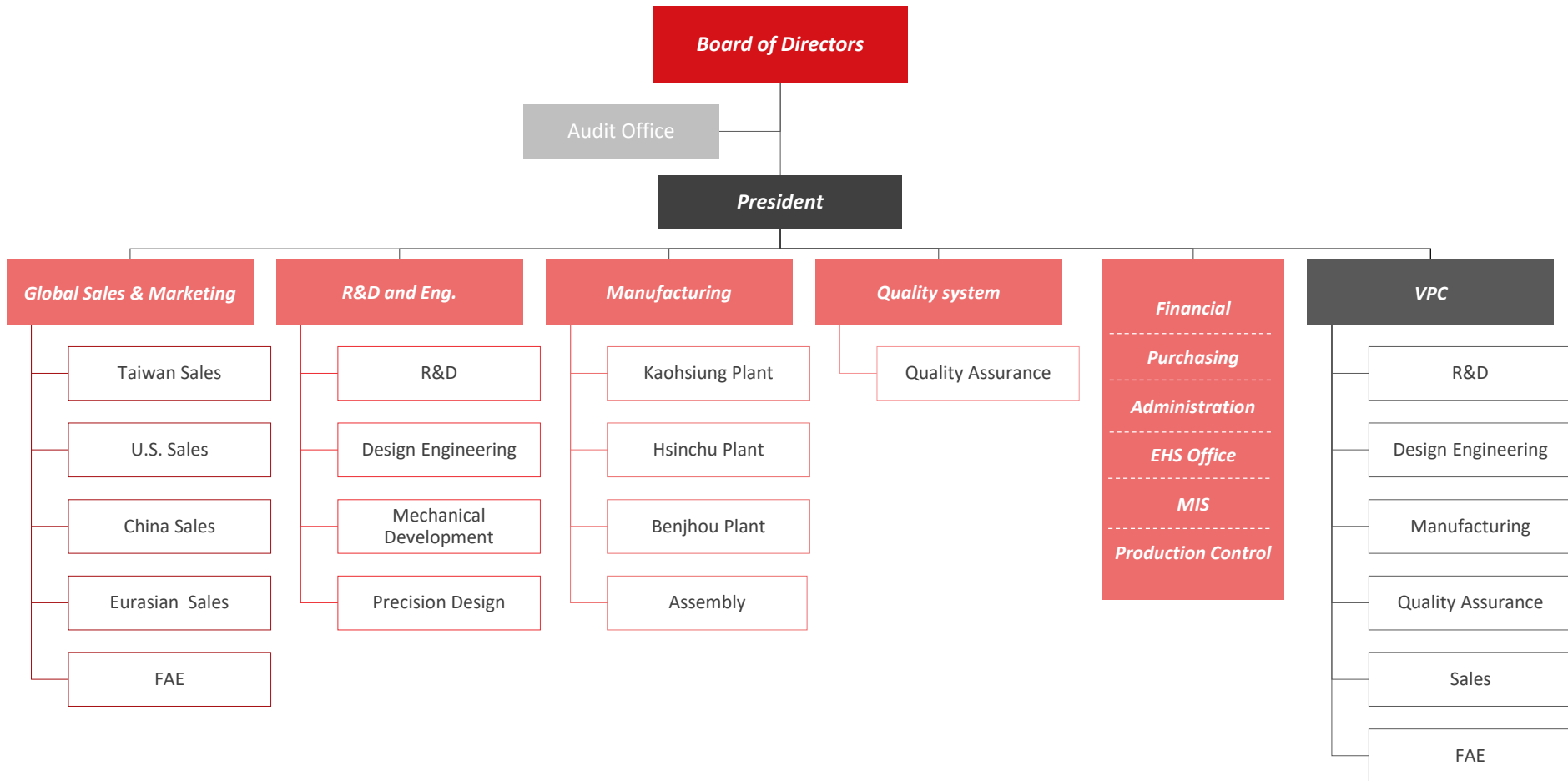
WinWay Introduction

Your trusted partner in IC testing !

<i>Name</i>	WinWay Technology Co., Ltd.
<i>Establishment Date</i>	2001 / 04 /10
<i>President</i>	Mark Wang
<i>Paid-in Capital</i>	NTD 302,980,000
<i>Employee</i>	592
<i>Location</i>	No. 68, Chuangyi S. Rd., Nanzih Dist., Kaohsiung City, Taiwan(R.O.C)
<i>Business Type</i>	Manufacturing & Wholesale Trade
<i>Business Item</i>	Semiconductor testing solution



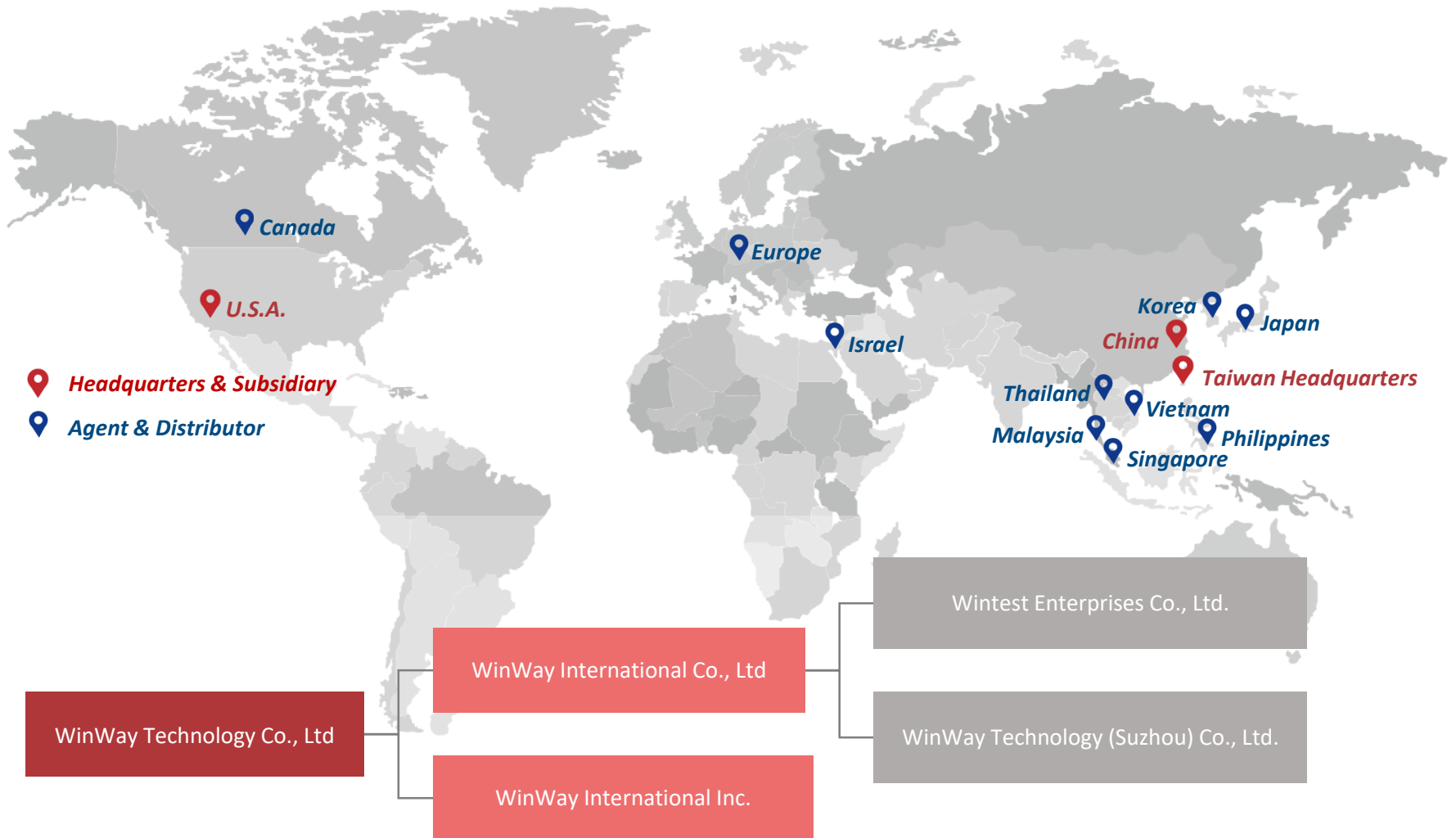
Organization



Milestone

- **2001** Founded WinWay Tech. Co., LTD.
- **2002** Obtained various patents of semiconductor testing equipment.
- **2004** Launched sockets for CMOS Image sensor and test fixture for BGA substrate.
- **2005** Established a factory in Taoyuan.
- **2006** Quality certificated with ISO-9001.
- **2007** Wintest Enterprises Co., Ltd and WinWay International Co., Ltd was established.
Integrated Business and Service team in Hsinchu branch.
- **2008** WinWay International Inc. was established
Launched ATC Thermal Controller.
- **2009** Launched WLCSP Probe Head, Kelvin contact application.
- **2010** Launched Sandwich Coaxial socket.
- **2011** Launched WLCSP fine pitch probe head/ probe card/ direct dock solution.
- **2012** The headquarters building in Taiwan was inaugurated in December.
BiTS workshop published paper
- **2013** WinWay Tech. won the 22nd National Award of Outstanding Small and Medium Enterprises & the 16th Rising Star Award of the Ministry of Economic Affairs.
- **2014** WinWay Technology acquired Saber Probe based vertical probe card operations of Wentworth Laboratories Inc.
WinWay Technology (Suzhou) Co., Ltd. was established.
- **2015** Launched Brownie coaxial socket & E-Flux.
- **2016** Launched HEATCon
- **2017** Launched P0.4 brownie coaxial probe head.
- **2018** Establish the VPC division in Hsinchu branch
- **2019** Listed as initial Public Offering(IPO).
Expand the Suzhou factory

Subsidiaries and Service Networking



Product Overview



Vertical Probe Card



WLCSP Probe Card

Thermal Control System



ATC



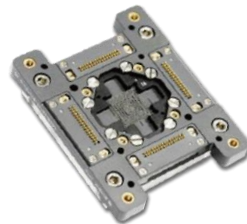
HEATCon



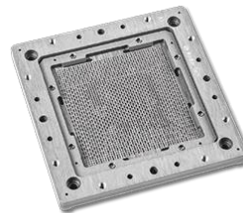
E-Flux



Socket & Lid



PoP Socket



Coaxial Socket



Burn-in Socket



Contact Element

Marketing Application



Product Roadmap



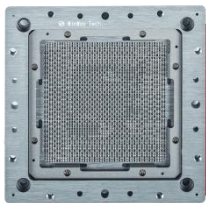
Vertical Probe Card

- **Pitch** 80um → 60um
- **Test Temp.** -50~175°C → -50~200°C



WLCSP Probe Card

- **Multi Site** 28 → 32
- **Bump Count** 4500 → 5000



Coaxial Socket

- **Pitch** 400um → 350um
- **Speed** 56Gb/s → 112Gb/s PAM4



Thermal Products

- **Temp. Range** -60~150°C
- **High Power** 800W → 950W



Burn-in Socket

- High-End Customized
- Superior Precision Machining Capability

Wafer Test

Final Test

Market Application



Wireless Comm



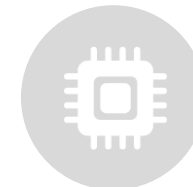
Automotive



A.I.



Edge Computing



GPU

VLSI Marketing Information

Test Socket Share 2018

Company	Region	Major Product	\$M	Share %
Cohu	North America	SOC	123.60	15.4%
ISC	Korea	Memory	85.32	10.6%
LEENO	Korea	Memory & SOC	75.80	9.4%
Smiths Interconnect	Europe	Connector & SOC	58.30	7.3%
Yokowo	Japan	Pogo Pin	54.72	6.8%
WinWay	Taiwan	SOC	45.06	5.6%
Yamaichi Electronics	Japan	Burn-In Socket	37.25	4.6%
Enplas	Japan	Burn-In Socket	24.86	3.1%
NHK Spring	Japan	Pogo Pin	24.45	3.0%
Johnstech	North America	SOC	24.00	3.0%

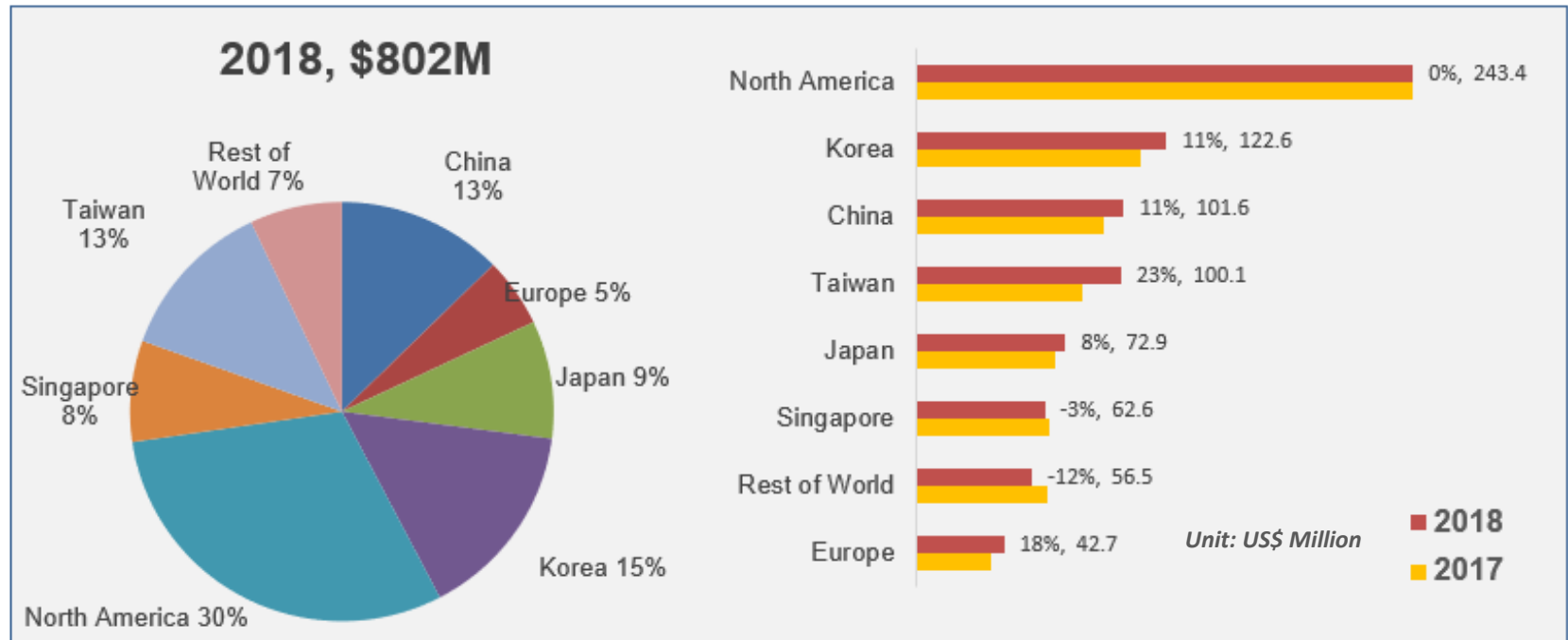
VLSIresearch Test Socket Share 2018

Rank	Company	Share %
1	Cohu	15.4%
2	ISC	10.6%
3	LEENO	9.4%
4	Smiths Interconnect	7.3%
5	Yokowo	6.8%
★ 6	WinWay	5.6%
7	Yamaichi Electronics	4.6%
8	Enplas	3.1%
9	NHK Spring	3.0%
10	Johnstech	3.0%
	Other	31.0%

Copyright © 2019 VLSI Research Inc. All rights reserved.
Distribution rights contained in T&Cs.
04, 2019

VLSI Marketing Information

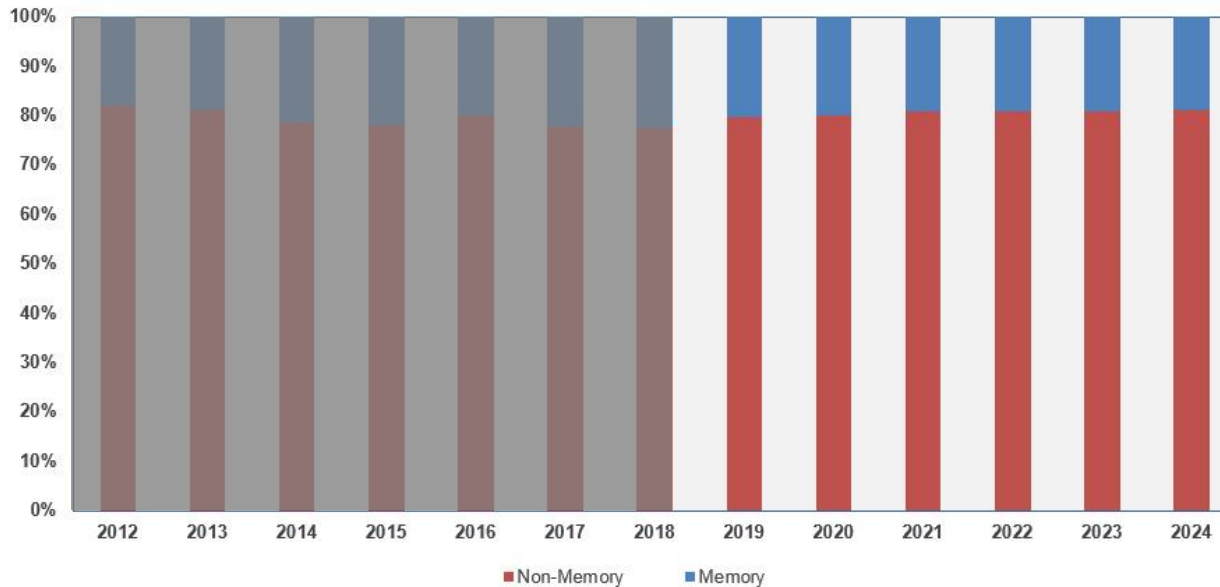
Test Sockets by Region of Consumption 2018, \$M



VLSI Marketing Information

Test and Burn-in Sockets by Application

Socket sales for non-memory applications were 78% in 2018



\$M

Application	2012	2013	2014	2015	2016	2017	2018	2019	2020	2021	2022	2023	2024	CAGR 2013-2018	CAGR 2019-2024
Memory	160.35	171.56	212.69	214.47	202.01	267.06	273.68	234.32	241.72	258.16	268.49	271.43	277.40	9.8%	3.4%
Non-Memory	733.41	737.74	784.92	757.56	805.94	925.63	945.90	922.67	958.97	1091.58	1139.92	1140.80	1189.90	5.1%	5.2%
Total Test and Burn-in Sockets	893.76	909.30	997.61	972.03	1007.95	1192.69	1219.58	1156.99	1200.69	1349.74	1408.41	1412.23	1467.30	6.0%	4.9%
Annual Growth	3.8%	1.7%	9.7%	-2.6%	3.7%	18.3%	2.3%	-5.1%	3.8%	12.4%	4.3%	0.3%	3.9%		

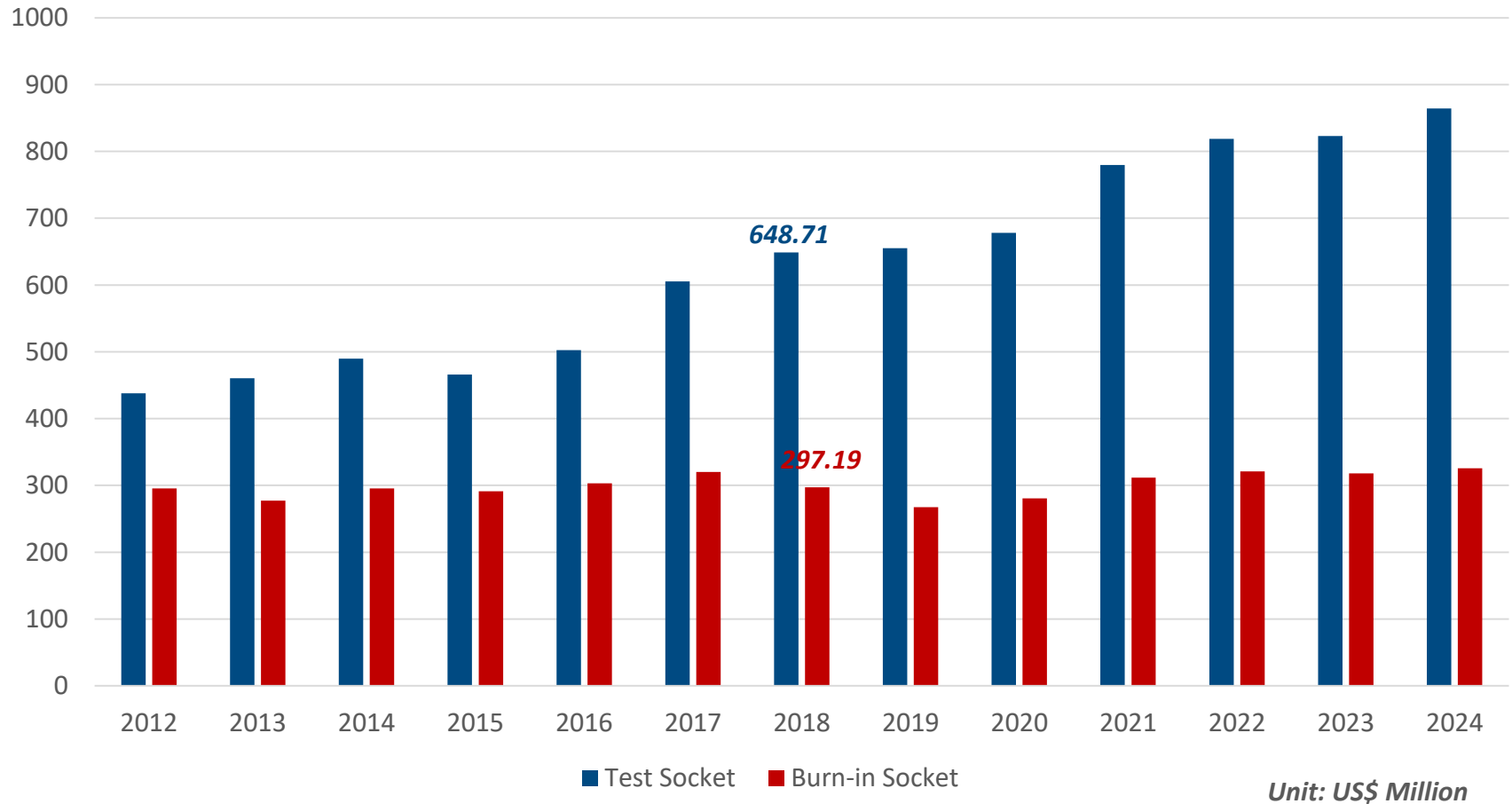
Copyright © 2019 VLSI Research Inc. All rights reserved.

Distribution rights contained in T&Cs.

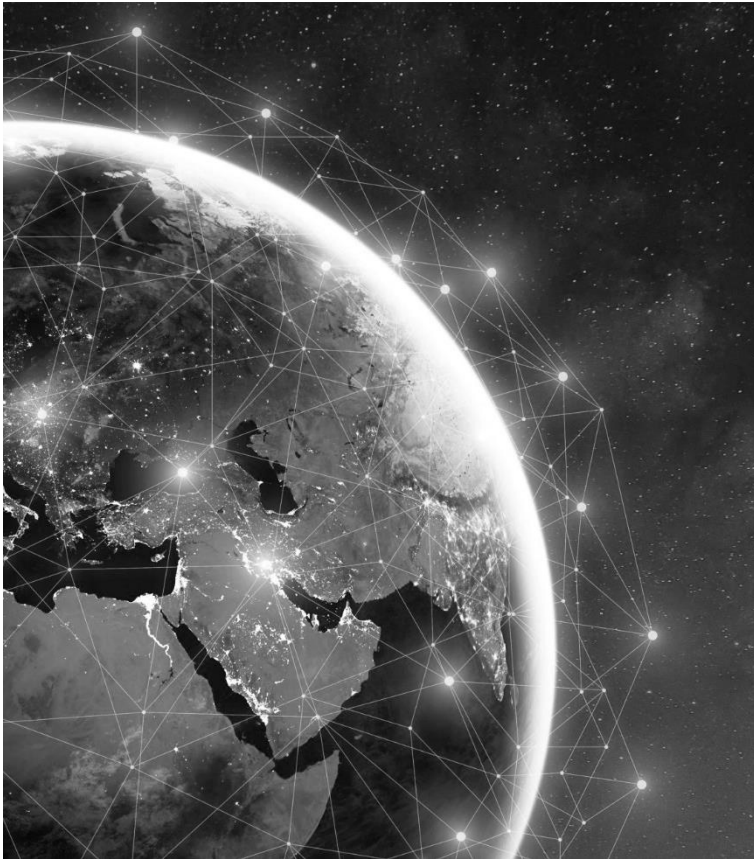
04, 2019

VLSI Marketing Information

The Test and Burn-in Socket Market for Non-Memory - Revenues, \$M



Core Competence



Soft core competence

- ✓ Worldwide 1st tier customers

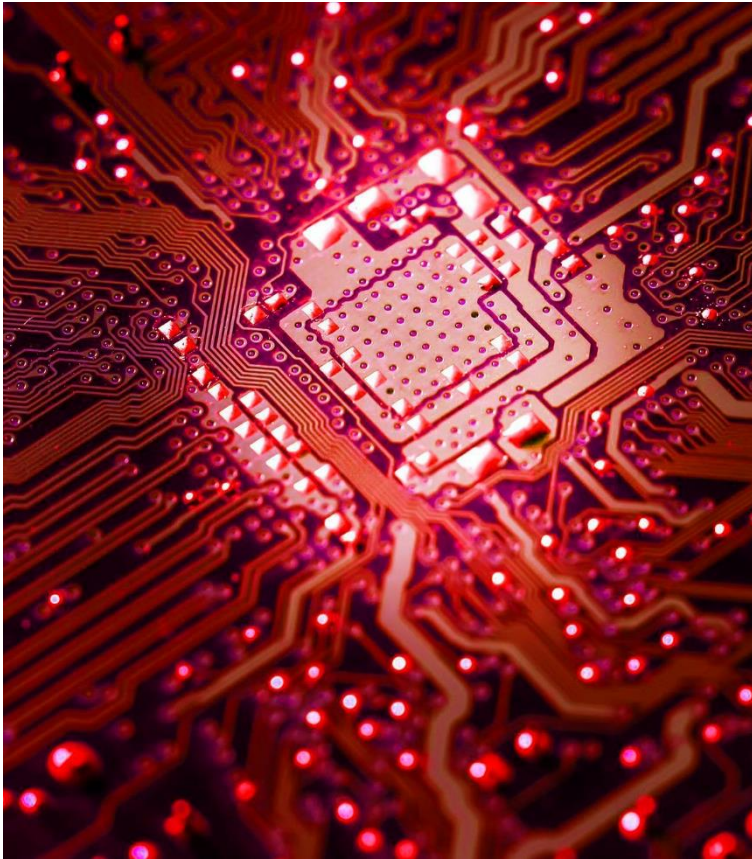
- ✓ Diversified industries

- ✓ Complete supply chain in Taiwan

- ✓ Impeccable customer service

- ✓ Well-communication capability

Core Competence



Hard core competence

- ✓ 3D and simulation capability

- ✓ Heavy investment in inspection equipment

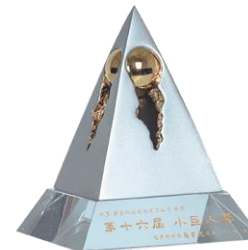
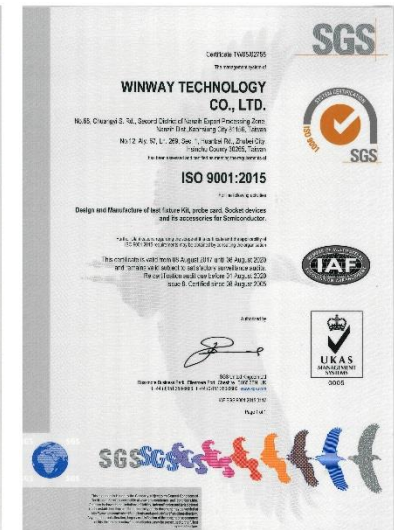
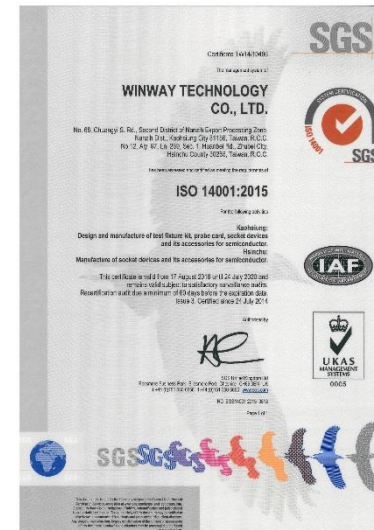
- ✓ Giant pin-embedding capacity

- ✓ Great flexibility in lead time

- ✓ Solutions to all types of packaging own 63 patents

Certification

- **2006** Quality certificated with ISO-9001.
- **2013** WinWay Tech. won the 22nd National Award of Outstanding Small and Medium Enterprises & the 16th Rising Star Award of the Ministry of Economic Affairs.
- **2014** WinWay is ISO-14001 International Environmental Management System certified since 2014
- **2018** Awarded the 15th Golden Torch Award for the Top Ten Outstanding and Potential Enterprises.



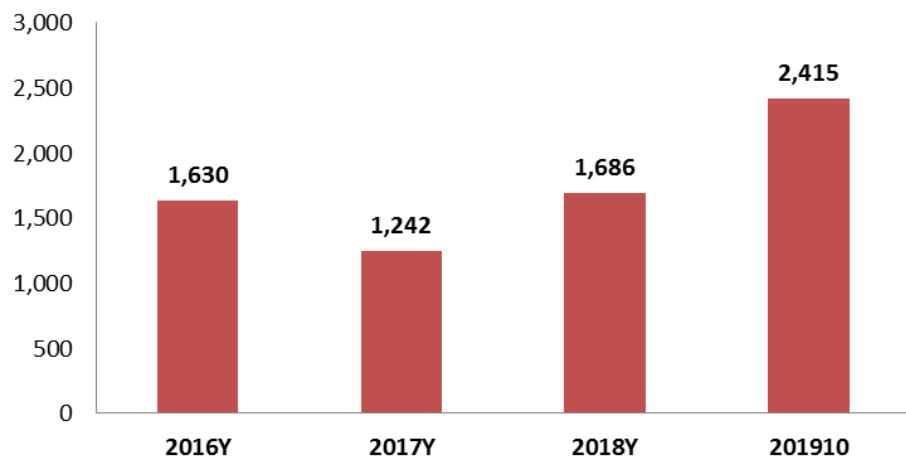


OPERATION & FINANCIAL RESULT

Financial Results

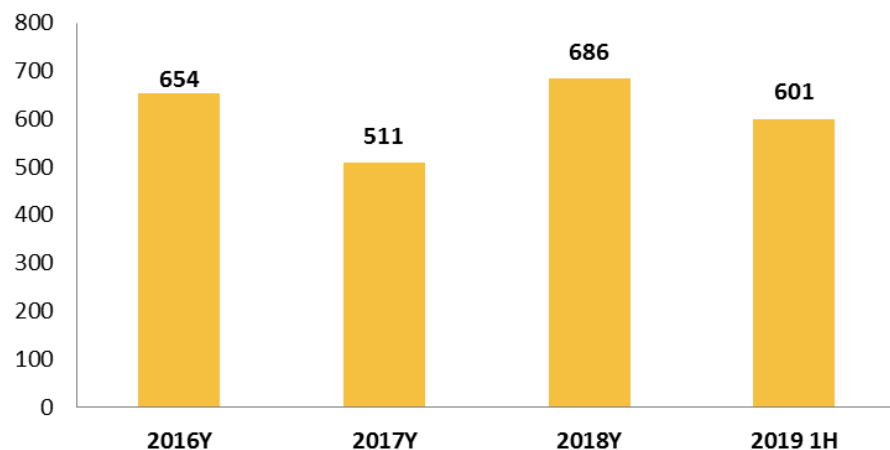
Revenue

NTD,M



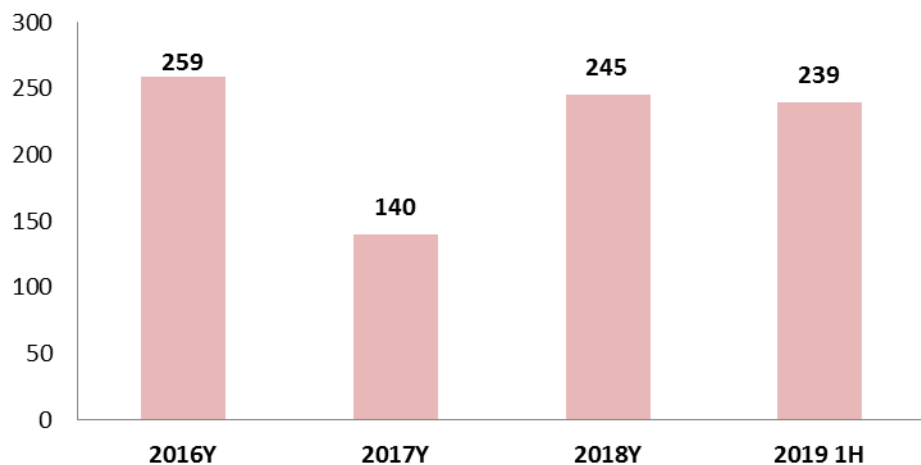
Gross profit

NTD,M

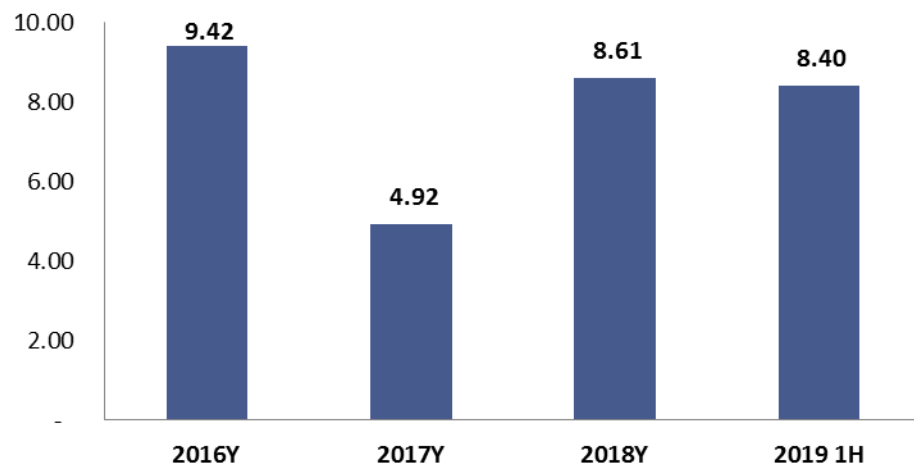


Net income

NTD,M



EPS





Thank you for your interest

You may contact WinWay Technology via
website <http://www.winwayglobal.com> or
e-mail to sales@winwayglobal.com

